
FILM IN MALAYSIA INCENTIVE (FIMI)

An overview of the financial incentive (30% - 35% cash rebate) offered by the Malaysia Government for eligible film & TV production and post-production activities within Malaysia, which available to both domestic and foreign producers.

Document Prepared by



QUALIFYING MALAYSIAN PRODUCTION EXPENDITURE

or abbreviated as QMPE, is the key criteria for qualifying for FIMI. The basis for calculating the refund amounts are based on the amount actually spent and paid by the applicant producer company on goods, services and land (or used locations) in Malaysia.

The following expenditures can be regarded as QMPE:

Service Provided in Malaysia - A service is provided in Malaysia if the service provider is located in Malaysia and must be a registered Malaysian company at the time when the service is provided.

.....

Apportionment of service provided - Apportionment calculations may be utilized where a service provider's contract does not distinguish between the services provided in and outside Malaysia.

.....

Malaysian-based Insurance - Expenditure on insurance policies that are unrelated to financing and are reasonably required for the making of the production where the service is provided in Malaysia.

.....

Legal expenses incurred in Malaysia - Legal expenses incurred in respect of services performed by a law firm in Malaysia during the making of the production.

.....

Travel within Malaysia - Travel costs that relate to production activity undertaken in Malaysia where that travel only within Malaysia.

.....

Freight travel within Malaysia - All freight travel costs within Malaysia necessary for the making of the production.

ELIGIBILITY FORMATS

The formats that are eligible for FIMI:

FEATURE FILMS

Including theatrical documentary features, animated features and IMAX that are intended to mean a Film of at least sixty (60) minutes in length that is intended to be screened as the main attraction in commercial cinemas. For large-format projects such as IMAX it is intended that the Film to be at least forty five (45) minutes in length.

SINGLE EPISODE PROGRAMME

A stand-alone programme of at least sixty (60) minutes in length that is exhibited commercially in a medium other than cinema. This category includes telemovies or movies-of-the-week, films released direct to DVD or films released on the internet, video-on-demand or a mobile phone delivery platform. A single episode programme other than a documentary may be an animated film.

NEW

GAME SHOWS & REALITY SHOWS

Programmes in which members of the public or celebrities are filmed living their everyday lives or undertaking specific challenges as part of a contest or other situation where a prize is awarded. News and sports programme are excluded.

SERIES OR SEASON

A series or season of a series is a multiple-episode film that does not receive a cinema release but is exhibited commercially on another medium: e.g. straight to DVD or via the internet. A series or season of a series must be at least two (2) episodes. Each episode must be at least twenty-two (22) minutes in length, with the exception of animation programs which must be at least two (2) minutes and above. A series or season of a series may be an animated film or a documentary.

FILM IN MALAYSIA INCENTIVE (FIMI) UPDATES

30% + 5% ADDITIONAL CASH REBATES



National Film Development Corporation Malaysia



KEMENTERIAN KOMUNIKASI DAN MULTIMEDIA MALAYSIA

QUALIFYING MALAYSIAN PRODUCTION EXPENDITURE (QMPE)

QUALIFYING MALAYSIAN PRODUCTION EXPENDITURE (QMPE) FOR POST-PRODUCTION

DOMESTIC PRODUCTION

INTERNATIONAL PRODUCTION

- A MINIMUM OF MALAYSIAN RINGGIT ONE MILLION (MYR1,000,000.00) OF QMPE IN AGGREGATE FOR PRODUCTION WORK ONLY IN ORDER TO BE ENTITLED TO 30% CASH REBATE; OR
- A COMBINED QMPE FOR PRODUCTION WORK AND POST-PRODUCTION WORK WITH A MINIMUM OF MALAYSIAN RINGGIT ONE MILLION (MYR1,000,000.00) IN ORDER TO BE ENTITLED TO 30% CASH REBATE.

- A MINIMUM OF MALAYSIAN RINGGIT FIVE MILLION (MYR5,000,000.00) OF QMPE IN AGGREGATE FOR PRODUCTION WORK ONLY IN ORDER TO BE ENTITLED TO 30% CASH REBATE; OR
- A COMBINED QMPE FOR PRODUCTION WORK AND POST-PRODUCTION WORK WITH A MINIMUM OF MALAYSIAN RINGGIT FIVE MILLION (MYR5,000,000.00) IN ORDER TO BE ENTITLED TO 30% CASH REBATE.

- A MINIMUM OF MALAYSIAN RINGGIT TWO HUNDRED AND FIFTY THOUSAND (MYR250,000.00) OF QMPE IN ORDER TO BE ENTITLED TO 30% CASH REBATE.

- A MINIMUM OF MALAYSIAN RINGGIT ONE MILLION (MYR1,000,000.00) OF QMPE IN ORDER TO BE ENTITLED TO 30% CASH REBATE.

SUMMARIZED BY



FILM IN MALAYSIA INCENTIVE (FIMI) UPDATES

30% + 5% ADDITIONAL CASH REBATES



National Film Development Corporation Malaysia



KEMENTERIAN KOMUNIKASI DAN MULTIMEDIA MALAYSIA

CULTURAL TEST (5% ADDITIONAL CASH REBATE)

CAST & CREW SERVICES RENDERED IN MALAYSIA

DOMESTIC PRODUCTION

INTERNATIONAL PRODUCTION

- CULTIVATE THE SPIRIT OF **LOVE FOR MALAYSIA**.
- CULTIVATE THE **SPIRIT OF PATRIOTISM** TOWARDS MALAYSIA IN THE PROJECT, SUCH AS: (A) BE PROUD OF THE NATION'S ACHIEVEMENTS AND CULTURE; (B) MAINTAIN THE CHARACTERISTICS OF THE NATION AND ITS CULTURAL POLICIES; AND/OR (C) RESPECT FOR OTHER RACES AND RELIGIONS.
- **HONOR THE HISTORY OF MALAYSIA** AND REMEMBERING THE MALAYSIAN HEROES WHO HAVE SACRIFICED FOR MALAYSIA.
- PORTRAY MALAYSIA AS A COUNTRY THAT IS **CULTURED, CIVILIZED AND DISPLAY OF NOBLE VALUES** AMONG MALAYSIANS.

- **LOCATION:** (A)PORTRAY MALAYSIA AS A POSITIVE COUNTRY; (B)PORTRAY MALAYSIA AS AN INTERESTING TOURIST DESTINATION; (C)DISPLAY THE BEAUTIFUL VIEW AND DESTINATION IN MALAYSIA; AND/OR (D)PROMOTING MALAYSIA INDIRECTLY.
- **CULTURAL VALUES** (A)DISPLAY THE CULTURE OR LIFESTYLE IN MALAYSIA, FOR EXAMPLE FOOD, LANGUAGE, HERITAGE, TRADITIONAL ETC; OR (B)DISPLAY THE CHARACTERISTICS OF CUSTOMS AND TRADITIONS OF MALAYSIANS OR CULTURAL EVENTS, FOR EXAMPLE WEDDING CEREMONY, FESTIVALS, BIRTH.
- **INVOLVEMENT OR HIRING OF ANY OF THE FOLLOWING LOCAL PRODUCTION CAST AND CREW IN THE PROJECT:** (A)DIRECTOR (B)CO-DIRECTOR (C)SECOND UNIT DIRECTOR (D)FIRST ASSISTANT DIRECTOR (E)SCREENWRITER (F)LEADING ROLE BY ACTOR OR ACTRESS (G)DIRECTOR OF PHOTOGRAPHY (H)SECOND UNIT OF DOP (I)EDITOR (J)PRODUCTION DESIGNER (K)SOUND EDITING (L) SOUND MIXING (M)VISUAL EFFECTS (N)SUPERVISOR (O)COMPOSER (P)COSTUME DESIGNER (Q)KEY MAKE UP (R)KEY HAIR ARTIST (S)STUNT DIRECTOR (T)STUNT COORDINATOR

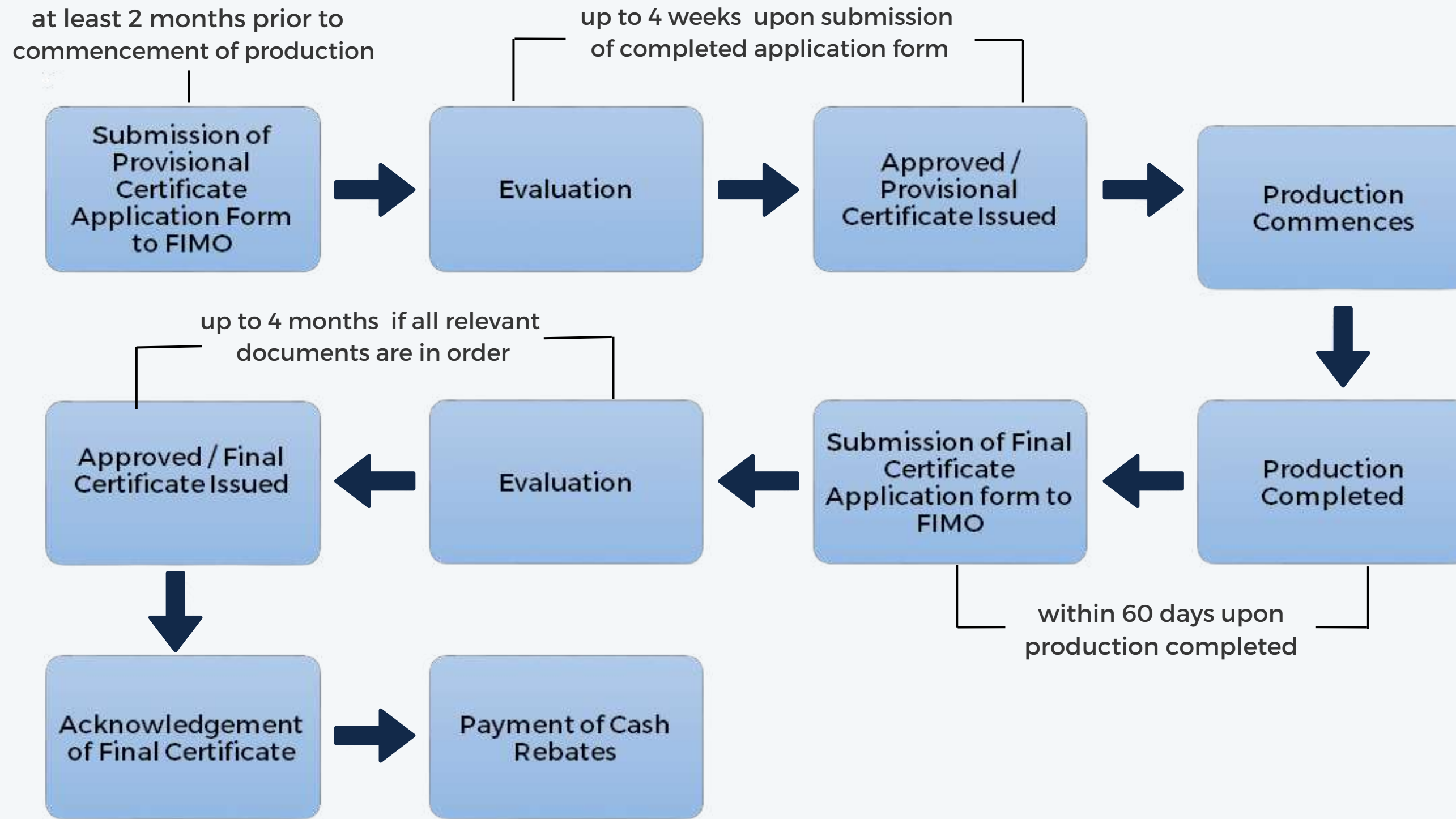
- CLAIMABLE ON THE FIRST MALAYSIAN RINGGIT SEVEN MILLION FIVE HUNDRED THOUSAND (MYR7,500,000.00) OF ANY ONE PERSON'S SALARY (CAST AND/OR CREW) FOR SERVICES RENDERED IN MALAYSIA.

- CLAIMABLE ON THE FIRST MALAYSIAN RINGGIT SEVEN MILLION FIVE HUNDRED THOUSAND (MYR7,500,000.00) OF ANY ONE PERSON'S SALARY (CAST AND/OR CREW) FOR SERVICES RENDERED IN MALAYSIA.

SUMMARIZED BY



FILM IN MALAYSIA INCENTIVE (FIMI) APPLICATION PROCEDURES



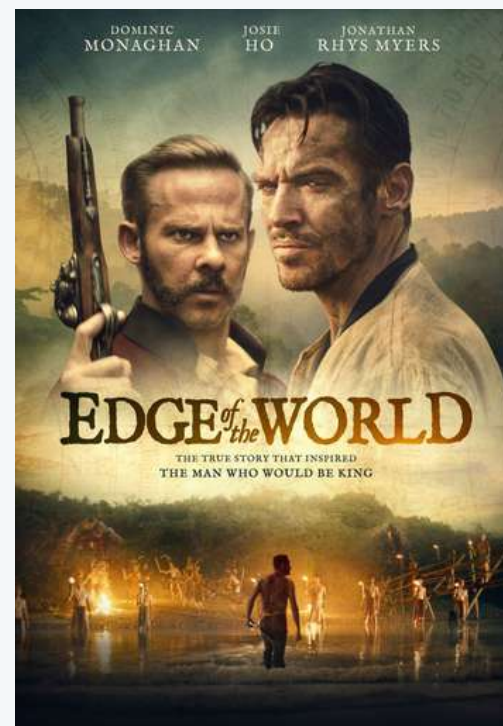
AWARDED PROJECTS (FOREIGN)

since it began in 2013 to date, FIMI has had incentivized more than 100 projects from all over the world to film in Malaysia.

Here are some of the past projects->

***Click on posters for link to official trailers.

***Click [HERE](#) for the full list.



**EDGE OF THE WORLD
(2021)**



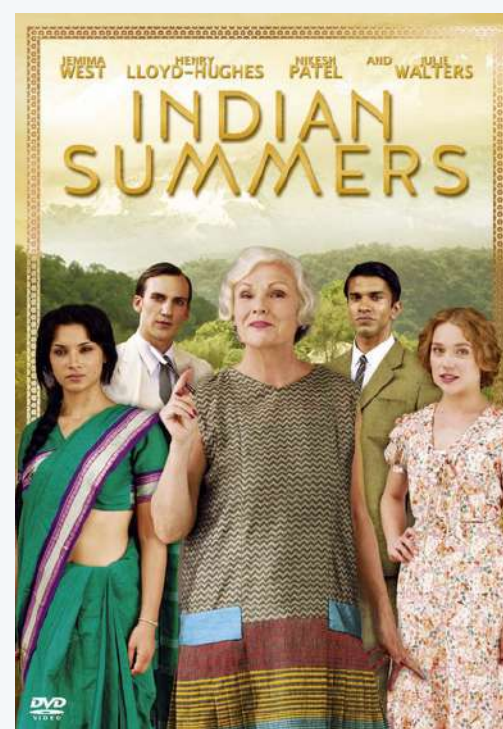
**SINGAPORE GRIP
(2021)**



**6 UNDERGROUND
(2019)**



**CRAZY RICH ASIANS
(2018)**



**INDIAN SUMMERS
SEASON 1 & 2
(2015 - 2016)**



**ASIA'S GOT TALENT
SEASON 1, 2 & 3
(2016 - 2019)**



**BLACKHAT
(2015)**



**MARCO POLO
SEASON 1 & 2
(2015 - 2016)**



FOR MORE INFORMATION

PLEASE CONTACT

FILM IN MALAYSIA OFFICE:

+603 4104 1300

zokifli@finas.my

shikin@finas.my

afifa@finas.my

www.filminmalaysia.com

ISKANDAR MALAYSIA STUDIOS:

+607 560 1888

rashid@iskandarmalaysiastudios.com

catherine@iskandarmalaysiastudios.com

davehow@iskandarmalaysiastudios.com

www.iskandarmalaysiastudios.com